

PASSPORT TO GREEK LIFE



West Virginia University®

CENTER FOR FRATERNAL VALUES
AND LEADERSHIP

IMPORTANT DATES

DO MORE. BE MORE. GO GREEK.

- 3** WELCOME
- 4** COMMUNITY OVERVIEW
- 5** WHY GREEK LIFE?
- 7** THE FIVE PILLARS
- 14** PROGRAMS AND TRADITIONS
- 19** JOIN
- 21** MEMBERSHIP RESPONSIBILITIES
- 22** I WANT TO JOIN, NOW WHAT?
- 23** GOVERNING COUNCILS
- 29** RECRUITMENT AND INTAKE
- 31** GREEK TERMINOLOGY
- 33** NEW MEMBER PROGRAM
- 35** FALL SEMESTER CHECKLIST

WELCOME, MOUNTAINEERS!

We're so pleased to have you join the family and we can't wait for you to experience all that this wonderful University has to offer.

While you're here, take advantage of every opportunity to learn, expand your horizons and get outside of your comfort zone. You're surrounded by peers from many diverse backgrounds, world-class educational opportunities, West Virginia's natural beauty and limitless opportunities to grow both inside and out of the classroom - make the most of it!

As you begin to figure out how you will spend your 168 hours a week, we hope that Greek life can be a part of your Mountaineer experience. Fraternity and sorority membership means you are a part of the Greek community, a leader on campus, an active member of the Mountaineer family and are held accountable to live the values of your organization. Members are provided with a support system of friends within their organization and the Greek community with whom they grow and learn; these opportunities for growth enhance not only your resume, but your life.

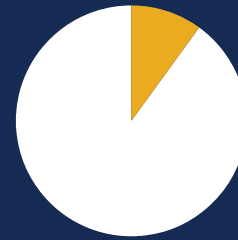
During your first semester at WVU, we encourage you to get involved and study hard. Fraternities and sororities look for well-rounded members who are involved with other organizations and activities and are successful academically. The 168 hours you have every week give you plenty of time to study, attend class, maintain a healthy lifestyle, have fun and be involved around campus.

During your second semester at WVU, you are welcome to pursue fraternity or sorority membership, and we hope that this booklet serves as a guide for what membership means and how you can become a member. Our hope is that you gain from your Greek experience what millions of people across the country have gained and that this experience enriches your time here at WVU and beyond.

Let's go ...

The Center for Fraternal Values and Leadership

COMMUNITY OVERVIEW



1 in 10 WVU undergraduate students belongs to a fraternity or sorority



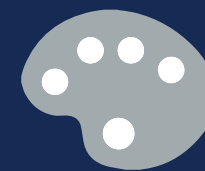
Members hail from 42 states



Members come from 933 different high schools



54% of members maintain at least a 3.09 average GPA



WVU fraternity and sorority members represent all academic colleges and 145 different majors



14 chapter houses



1,500 total members



25 chapters in 3 governing councils

WHY GREEK LIFE?



FRATERNITIES AND SORORITIES

are groups of men or women with common goals and aspirations, who are brought together by brotherhood or sisterhood. The members who form a fraternity or sorority share their time at WVU, and together, these members learn, grow and make the fraternity or sorority stronger. Their common experience builds ties that last a lifetime.

Being a part of fraternity and sorority life at WVU gives you a chance to ...

GAIN a support system, a brother/sisterhood and network of alumni.

LEARN leadership skills, time management and teamwork.

CHALLENGE yourself, get out of your comfort zone and try something new.

DO MORE on campus and in the community, help others and get involved.

BE MORE as a student. Be a leader, be a brother or sister, be a scholar, and be a part of something bigger than yourself.

“Before joining I never saw myself as a leader but after only a semester I decided to take on a leadership role within my sorority. It’s easy to feel like you can achieve anything with the support of your sisters. Along with sisterhood I’ve also gained a strong appreciation for philanthropy, community involvement and hard work.”

BETHANY SHANKLE

Mount Airy, MD
Alpha Omicron Pi

THE PILLARS OF GREEK LIFE

Fraternities and sororities have been in existence for over 200 years in the United States. Fraternal organizations were founded based on a set of core values which they continue to uphold as they have grown and adapted over the years. While each fraternity and sorority defines its own set of values, the West Virginia University Greek community collectively promotes a set of values that falls into the following core pillars:

**SCHOLARSHIP, LEADERSHIP, SERVICE,
BROTHERHOOD AND SISTERHOOD,
AND DIVERSITY AND INCLUSION**



SCHOLARSHIP

Your education is the main reason you have come to WVU and fraternities and sororities value and support the academic success of their members. Fraternities and sororities have programs designed to help members succeed academically, such as study hours, tutors, incentives and major-matching, through which older members help younger members navigate their classes.

Chapters and governing councils often host workshops and programs to assist you with study skills, applying for graduate school and improving your resume. Alumni members of the fraternity or sorority can also be helpful in finding jobs and sharing opportunities for continuing your education after your undergraduate years.



LEADERSHIP

Membership in a Greek organization provides numerous opportunities to discover what type of leader you can be. Leadership can take many forms, such as holding an elected or appointed position, being a role-model for your chapter, or positively representing the Greek community in campus leadership.

Joining a Greek organization gives you an opportunity to develop leadership, problem-solving and interpersonal skills that will help you in all aspects of life. Taking a leadership role is a great way to network in our community and land your dream internship or job. Our chapters also provide educational programs in areas such as time management, character building and effective communication strategies.

SERVICE

Greek organizations value service to the local community and the world, and perform both community service (the act of physically doing service work) and philanthropic work (which involves raising monetary funds for a specific cause).

Each fraternity and sorority has at least one philanthropic cause or service organization it works with. Many organizations support a specific cause on a national level, meaning all chapters around the country support that cause. Being involved in the greater Morgantown community and each organization's inter/national philanthropy are important components of being a member and teaches you about the Morgantown community, builds relationships and allows you to give back.



BROTHERHOOD AND SISTERHOOD

Most students seek Greek affiliation as a way to meet people and develop lifelong friendships. Through brotherhood and sisterhood retreats, social events and a variety of other chapter activities, students are able to build a close network of brothers and sisters to share in their college experience. All organizations host regular, substance-free brotherhood and sisterhood events each semester. Some examples include movie nights, laser tag, athletic events and more!

Sororities and fraternities look forward to their signature social events each year, which include formals, semiformals and themed date parties.

DIVERSITY AND INCLUSION

The West Virginia University fraternity and sorority community is dedicated to creating a diverse and inclusive community for all. We believe that creating an inclusive community is essential to the fulfillment of the mission of both the institution and our organizations.

The West Virginia University Greek community promotes each member's commitment to diversity and inclusion by advocating a fraternity and sorority culture that is receptive to and appreciative of the diversity of the West Virginia University student body. We recognize that appreciating diversity means valuing the elements of life that make Mountaineers different from one another.



PROGRAMS AND TRADITIONS

In addition to the bonds between the members of a Greek organization, joining a fraternity or sorority allows you to connect with other chapters within the WVU Greek community. Throughout the year, our Greek community and governing councils host various programs, giving members and organizations the chance to come together celebrating common causes.

“I entered Greek Life in hopes that it would give me a home away from home. I wanted to make WVU’s giant campus seem smaller. Since joining, I feel that I have become a better version of myself. I strive for excellence academically and want to be actively involved on our campus. My chapter has given me an amazing place to grow in all aspects of college life.”

BRETTON WALL

Princeton, WV
Lambda Chi Alpha

“Being surrounded by these great members has allowed me to grow, succeed and to accomplish things I wouldn’t have been able to without them.”

JAMES MAY

Upper Marlboro, MD
Phi Beta Sigma Fraternity, Inc.



HOMECOMING

Since 1910, Homecoming has been a time of tradition around our campus that our chapters look forward to every fall semester. Greek organizations are grouped in teams to participate in service projects, games, contests and create floats to be shown in the Homecoming Parade, which is widely attended by alumni and community members. Homecoming activities are focused on promoting and celebrating school spirit with current students and alumni.



GREEK WEEK

Greek Week is a series of events and service projects centered around a theme that is held each spring semester. The week aims to share with the greater community what membership in a fraternity or sorority is all about. Previous themes have included the 90s, cartoons, super heroes and musicals.

Teams compete to be crowned Greek Week champions by performing service, collecting items for local charities, playing a series of games and creating a team banner. The week ends with a lip sync battle.



BIG GREEK DAY OF SERVICE

This annual event, which began in 2016, kicks off Greek Week each year. Hundreds of Greek students participate in 20+ service projects across Monongalia, Marion and Preston counties, learning about the community where they live and building relationships with those who live here. This service is a valuable learning experience and also is a great way for fraternity and sorority members to get to know students from other organizations while giving back to the community.



NPHC STEP SHOW

National Pan-Hellenic Council (NPHC) hosts a step or stroll competition every year. It is generally performed by groups of three or more, often in arrangements that give tribute to the history of their organizations. Audiences from different states come out to Step Show, which is NPHC's biggest event of the year. This is a time for the council and its members to have fun after a long semester of scholarship, community service and brotherhood/sisterhood.



LEADERSHIP PROGRAMS

Greek organizations often provide opportunities to go on leadership retreats and attend guest speakers who focus on leadership and personal development. Our fraternities and sororities place a significant value on professional development, leadership training and networking. We encourage our members to participate in opportunities that will enable them to learn, grow and follow their aspirations.

Most inter/national organizations sponsor leadership conferences that chapters from all over can attend. These events give members the opportunity to network and meet individuals that share the same values and bring back great ideas to our campus.

“Knowing you have a group of people to back you up and love you unconditionally is the best feeling.”

ZACK PELL
Morgantown, WV
Pi Kappa Phi

“Joining a community of strong women made my first year at WVU much more enjoyable and calmed my fears.”

Jenelle Jennings
Rainelle, WV
Alpha Phi

“My time at WVU has been made better because of my brothers.”

DAN LEVY
Newtown, PA
Alpha Epsilon Pi

“Greek life has allowed for me to help people and solve problems. Not only do Greeks serve one another, but we also serve our community.”

JOCELYN KING
Weirton, WV
Zeta Phi Beta Sorority, Inc.

JOIN



SPRING RECRUITMENT

West Virginia University has a spring primary recruitment/intake period, which means as a first-time student, you have the fall semester to get acquainted with campus, adjust to college, participate in other campus activities and study hard. In the spring semester, given that you meet the requirements to participate in recruitment or intake, you are eligible to join a fraternity or sorority. Transfer and upperclass students are welcome to participate in fall recruitment events, which are generally more informal.

Spring may seem far away, but it's best to prepare during the fall semester, so read on to learn how you can be ready to join!

REQUIREMENTS TO JOIN

West Virginia University has two requirements for students in order to participate in any recruitment or intake activities. Individual chapters may have further requirements regarding GPA, campus activities, character, etc. WVU's requirements are as follows:

GPA Students must have at least a 2.75 overall GPA in order to join a fraternity or sorority at West Virginia University.

CREDITS You must have completed 12 or more hours on campus OR have at least 12 transfer credits from another college/university that is recognized by WVU AND be a full-time student in order to join.

“The high standards expected of me in Greek life have made me a stronger student.”

HADEN MILLER

Bridgeport, WV
Phi Kappa Psi



MEMBERSHIP RESPONSIBILITIES

Once you're a member, there are some additional expectations that you will be held to. Make sure you understand these expectations and ask questions about them during any recruitment/intake events.

ACADEMIC Members are expected to maintain at least a 2.75 GPA, and many chapters have more stringent requirements to remain in good standing.

FINANCIAL Membership in a fraternity or sorority DOES cost money. Chapter dues cover the cost of events and programs the chapter holds throughout the year, inter/national fees and initiation fees support the inter/national organization and for chapters with housing, parlor fees are paid by members who live-out to give you access to the house, while room and board covers your room/utilities/meal plan, etc. for members who live-in. All financial details are specific to each chapter.

TIME COMMITMENT Being a member does take time to attend meetings, brother/sisterhood functions, hold leadership positions and more. Members should expect to spend a few hours a week on Greek events, but participation in other organizations, work and athletics are highly encouraged, and many Greek students participate in a wide variety of campus activities.

HOUSING Fourteen of our chapters have housing close to the downtown campus. Chapters with housing expect members to live-in for a portion of their time at WVU as space allows. Living-in can provide great opportunities to further develop brother/sisterhood with the convenience of great locations and many amenities similar to those of the residence halls. These homes are not considered on-campus housing and are owned and managed by alumni corporations, headquarters offices, landlords and independent housing groups. Be sure to ask individual chapters about housing amenities and options.

MEMBERSHIP COMMITMENT The Center for Fraternal Values and Leadership believes that the fraternity/sorority experience is not just four years, but for life!

I WANT TO JOIN, NOW WHAT?

The first step in joining a fraternity or sorority is determining which of the three governing councils at WVU is right for you. Each council is made up of unique organizations and recruitment processes, so explore each one on the next few pages to determine which one you are most interested in.



INTERFRATERNITY COUNCIL



The Interfraternity Council (IFC) is the governing body for the nine social and social-professional men's fraternities on campus. The executive board is comprised of eight affiliated members of these fraternities to represent fraternity interests to the campus and surrounding community. The IFC works to develop programs that will foster positive growth of fraternity men through qualities of leadership, devotion to scholarship and commitment to community outreach. The IFC works to stimulate a positive Greek atmosphere at West Virginia University in the surrounding community and nationally by promoting unity between chapters, higher standards of studentship and collaboration between West Virginia University and IFC chapters.



 @WVUFraternities



NATIONAL PAN-HELLENIC COUNCIL



There are nine historically African-American sororities and fraternities, known as the Divine Nine. West Virginia University is proud to have seven active NPHC chapters at this time. NPHC promotes academic excellence, unity, service within the community and strong bonds of brotherhood and sisterhood.

The stated purpose and mission of the National Pan-Hellenic Council, Inc. is “Unanimity of thought and action as far as possible in the conduct of Greek-letter collegiate fraternities and sororities and to consider problems of mutual interest to its member organizations.”

 @wvu.nphc

 @nphcwvu



PANHELLENIC ASSOCIATION



The Panhellenic Association serves as the governing body for the eight inter/national sororities that are affiliated with the National Panhellenic Conference. Panhellenic sororities offer educational programs, community service projects, leadership training, social functions and sisterhood to last through college and beyond.

Every sorority member belongs to the Panhellenic Association immediately upon becoming a new member. The Panhellenic Association is led by an elected board of eight officers and two delegates from each of the member groups that comprise the Panhellenic Council. The council works to unite sorority women to focus on common goals and to create a network of support by providing interactive programs and activities.

  @WUPanhellenic

RECRUITMENT AND INTAKE PROCESSES

Three different membership recruitment processes exist for fraternities and sororities to take in new members.

MEMBERSHIP INTAKE:

The National Pan-Hellenic Council fraternities and sororities participate in membership intake, which is organized by the individual chapters. Undergraduate students who wish to join an NPHC organization must meet specific membership qualifications. These standards include, but are not limited to, academic achievement, community service and good character.

Interested candidates are expected to:

- Research each individual organization and chapter
- Attend various events hosted by NPHC organizations on campus
- Attend an interest meeting or awareness seminar, hosted by individual chapters
- Adhere to WVU's intake requirements (see page 20)

Learn more at greeklife.wvu.edu/join/nphc

FRATERNITY RECRUITMENT:

The fraternities that are members of the North American Interfraternity Conference participate in fraternity recruitment, which gives men a chance to get a feel for fraternity life and learn about the chapters at WVU. This is a semi-structured week, and prior registration is required.

Interested men are expected to:

- Attend one IFC information session in the fall or spring semester
- Observe the no-alcohol policy during recruitment
- Adhere to WVU's recruitment requirements (see page 20)



SORORITY RECRUITMENT:

The eight sororities that are members of the National Panhellenic Conference participate in primary recruitment, which gives potential new members a chance to visit with each chapter and follows a structured schedule of events. The purpose of this week-long process is to match chapters and potential new members by having you meet all chapters at the beginning of the week and gradually narrowing down the chapters throughout the week. At the end of recruitment, you may be offered a bid, or invitation to membership.

Primary recruitment is held early in the spring semester, in the month of January.

Interested women are expected to:

- Keep an open mind about all organizations prior to sorority recruitment
- Attend one recruitment information session in the fall semester
- Register online between October and January, which includes submitting a registration fee and recommendation letter
- Attend a recruitment orientation during the first week of spring semester
- Attend all recruitment events during primary recruitment week
- Adhere to WVU's recruitment requirements (see page 20)

Registration will be open from October through January at greeklife.wvu.edu/join/panhellenic

IT'S ALL GREEK TO ME

FRATERNITY AND SORORITY TERMINOLOGY

ACTIVE A student who is a fully initiated member of a fraternity or a sorority and in good standing financially and academically.

ASSOCIATE/NEW MEMBER A student who has not been initiated and who may be serving as a “new” or “associate member” of a fraternity or sorority during the new member education process. This term is also used to refer to a new member of a fraternity or a sorority. After the recruitment period, new members learn the history of their national and local chapters, learn the values and principles of the group and get to know their fellow new members and the initiated members.

ALUMNI Members of a fraternity who have graduated.
(Singular is alumnus.)

ALUMNAE Members of a sorority who have graduated.
(Singular is alumna.)

BID An invitation to join a fraternity or a sorority.

CHAPTER A term used to refer to undergraduate fraternity or sorority students in a particular fraternity or sorority. This term is also used nationally to distinguish one group of students on a particular campus from those on another campus. Many national groups give their chapters names, such as a Greek-letter, or a combination of letters, or a Greek-letter and a state. Examples are the West Virginia Alpha Chapter, which is the designation for the Pi Beta Phi Sorority Chapter or the Iota Lambda Chapter of Lambda Chi Alpha Fraternity.

CROSSING OVER Becoming an initiated member of a National Pan-Hellenic Council, Inc. organization.

DEFERRED RECRUITMENT West Virginia University has adopted a deferred recruitment whereby all students at the University will not be eligible for membership in a social fraternity or sorority unless the student has (1) earned a minimum of 12 credits as a full-time student at the University in Morgantown and (2) holds a minimum overall grade point average of 2.75.

FRATERNITY A group of men or women bonded together by their ritual that contains the founding principles, ideals and aspirations of the group. Some national women’s groups normally called a “sorority” actually refer to themselves as “women’s fraternities.”

INITIATION A traditional ritual signifying full membership in a fraternity or sorority. This ceremony is normally very serious and has been passed down by the original founders of the organization. The official secrets of the organization are shared during the formal ritual of initiation.

LEGACY The brother or sister, son or daughter, grandson or granddaughter of a fraternity or sorority member. Each inter/national organization has its own policy regarding legacies.

NATIONAL/INTERNATIONAL The national or international governing organization of a fraternity or sorority.

NEW MEMBER PROGRAM A period of learning about fraternity or sorority life prior to initiation. This period varies for all groups.

PHILANTHROPY A charitable fundraiser sponsored by a fraternity or sorority.

RECRUITMENT Recruitment, informally called “rush,” is the time when fraternities and sororities recruit new members. IFC fraternities usually recruit the first month of each semester. Panhellenic sororities usually conduct primary sorority recruitment during the first few weeks of spring semester (for first-year students) and the first month of the fall semester (for returning and transfer students). NPHC fraternities and sororities conduct what they call “intake” throughout the academic year as determined by their membership and inter/national fraternity and sorority headquarters.





NEW MEMBER

NEW MEMBER EDUCATION

Once you receive a bid, your new member process begins. This is a time to learn about your organization before your initiation. Each organization has different lengths of new member periods and will host various meetings and events for new members to learn about the organization's history, purpose, goals, and get to know one another.

HAZING

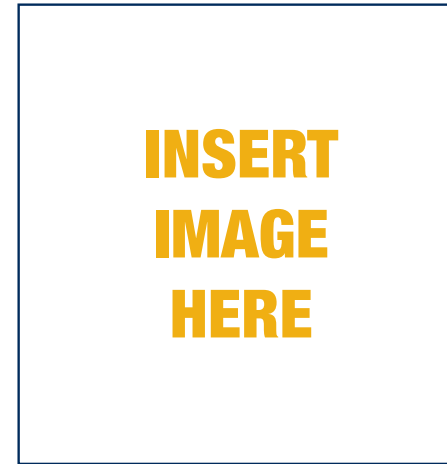
Hazing is against the West Virginia University Campus Student Code, West Virginia state law and has no place in fraternities or sororities. West Virginia University strongly believes in a vibrant learning environment where all students learn, grow, and develop to their fullest potential in a safe atmosphere. As such, WVU strongly prohibits any actions, including hazing, that detract from such an environment.

Read WVU's Hazing Policy Here: greeklife.wvu.edu/members/report-hazing

Report hazing to the Center for Fraternal Values and Leadership: 304-293-8201

INTRODUCE YOURSELF

Fraternity and sorority recruitment encourages you to put yourself out there and meet new Mountaineers. Fill out your passport ID with information about yourself and share it with your new family.



FIRST NAME

LAST NAME

HOMETOWN

BIRTHDAY

NATIONALITY/ETHNICITY

NAME OF HIGH SCHOOL

MAJOR

ANTICIPATED GRADUATION YEAR

SIGNATURE

FALL SEMESTER CHECKLIST

This checklist serves as a guide for what you should do during the fall semester in order to prepare for fraternity or sorority membership.

✓ ALL INTERESTED STUDENTS

- Put school first! Get into a routine and use a planner or app to manage your time
- Attend a WVU athletic event
- Attend a program on campus that isn't required, such as a play, a guest lecture, or WVU All Night
- Figure out a place on campus where you study best
- Attend a student organization fair
- Meet your professors. Go to office hours even if it's just to introduce yourself!
- Sign up and volunteer for a service project on iServe

✓ PANHELLENIC

- Keep an open mind about all organizations prior to sorority recruitment
- Register online between October and January, which includes submitting a \$40 registration fee and recommendation letter
- Follow @WVPanhellenic on Twitter and Instagram

✓ NPHC

- Research each individual organization and chapter
- Attend various events hosted by NPHC organizations on campus
- Attend an interest meeting or awareness seminar, hosted by individual chapters

STAMPS

Follow the guidelines of the stamps below to fully prepare for rush in the spring.



GPA
Earn a 2.75 GPA or higher in your first semester



12 CREDITS
Earn at least 12 college credits in your first semester



ATTEND MEET THE GREEKS



ATTEND A PASSPORT TO GREEK LIFE INFO SESSION
In the fall semester



FOLLOW @WVUGREEKLIFE ON TWITTER AND INSTAGRAM



ATTEND A COUNCIL SPECIFIC INFO SESSION
Follow IFC, Panhellenic, and NPHC on social media for info session dates

**DO MORE.
BE MORE.
GO GREEK.**

CENTER FOR FRATERNAL VALUES AND LEADERSHIP

161 Mountainlair Student Union
P.O. Box 6505
Morgantown, WV 26506
greeklife@mail.wvu.edu

 greeklife.wvu.edu
 304-293-8201
 @WVUGreekLife
 @WVUGreekLife